



Functional Medicine

LAB TESTS

📞 9999992020

011-45004200

www.drdangslab.com

[Visit Our Website](#)

Functional Medicine Testing

Functional medicine testing transcends conventional symptom-based approaches, employing a comprehensive analysis of biochemical and metabolic markers. By delving deeper into the interconnectedness of bodily systems which regulate gut health, hormonal balance, and sleep patterns, these tests aim to identify the root cause of health concerns rather than simply treating symptoms. This holistic perspective allows healthcare practitioners to develop interventions tailored to each individual's unique needs, leading to a more proactive and preventive approach to optimizing your health.



Functional medicine aims at curing the root-cause of diseases

DISEASES

- Arthritis
- Cancer
- Diabetes
- Obesity

- Heart disease
- Auto-immune diseases
- Fibromyalgia


UNDERLYING CAUSES

- Inflammatory imbalances
- Hormonal imbalances
- Detoxification imbalances
- Structural imbalances
- Mitochondrial dysfunction

- Digestive
- Absorptive
- Microbiological imbalances
- Toxic chemical exposure

INDEX

1. [GI Effects Comprehensive Profile \(GIFx\)](#)
2. [H. Pylori Breath Test](#)
3. [SIBO \(Small Intestinal Bacterial Overgrowth\)](#)
4. [Gut Barrier Panel](#)
5. [Zonulin](#)
6. [Gut Microbiome Test](#)
7. [Microbiomix Metagenomic Mapping](#)
8. [GI Map](#)
9. [EndoSelect \(Salivary Hormone Test\)](#)
10. [Adrenocortex Stress Hormone Profile](#)
11. [D.U.T.C.H. \(Dried Urine Test for Comprehensive Hormones\)](#)
12. [NeuroSpot Test](#)
13. [Comprehensive Thyroid Profile](#)
14. [Urine Iodine](#)
15. [Metabolomix](#)
16. [Organic Acid Test \(OAT\)](#)
17. [Essential & Metabolic Fatty Acids Analysis](#)
18. [Comprehensive Vitamins and Minerals Profile](#)
19. [RBC Folate Test](#)
20. [Allergynius Dx \(allergy-CRD testing-IgE based\)](#)
21. [ImuPro \(Food Intolerance/sensitivity tests-IgG based\)](#)
22. [METACHECK®](#)
23. [Histamine Intolerance Test \(DAO- Diamine oxidase\)](#)
24. [TruAge® Epigenetic Biological Age Test](#)
25. [myDNA Longevity Genetic Panel](#)
26. [NAD+ Profile](#)
27. [LIPOSCREEN™ LDL Subfractions & Oxidised LDL](#)
28. [CARDIAC PRO - Cardiac Health Profile](#)
29. [Heavy Metals \(Blood, Hair, Stool and Urine\)](#)
30. [Mycotox™ – Mycotoxin Panel](#)



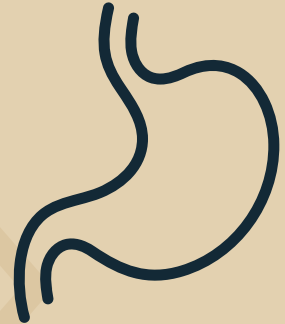
“Redefine your health narrative with our avant-garde functional medicine tests. Seamlessly integrated in-house and in collaboration with elite labs globally, discover a new level of well-being tailored just for you.”



DR. ARJUN DANG
(CEO, DR. DANGS LAB)

1. GI Effects Comprehensive Profile (GIFx)

The GI Effects Stool Profiles are a suite of advanced stool tests that provide immediate, actionable clinical information for the management of gastrointestinal health. These advanced tests dive deep into digestion, inflammation, & the gut microbiome, revealing the root of your gastric woes. Utilizing cutting-edge technologies and biomarkers, these profiles offer valuable, actionable insights into digestive function, intestinal inflammation, and the intestinal microbiome. GIFx helps unlock a healthier you by opening the doors to personalized gut care. It is recommended to consult with a healthcare professional for accurate interpretation and personalized treatment planning.



[Read More >](#)

[Sample Report >](#)

2. H. Pylori Breath Test

The H. pylori Urea Breath Test is a highly accurate, non-invasive diagnostic tool used to detect *Helicobacter pylori*. H. pylori is a bacterium that can infect the stomach lining and cause symptoms such as indigestion, bloating, burping, reflux, nausea, and abdominal discomfort. H. pylori can also contribute to peptic ulcers, chronic gastritis, iron and B12 deficiency, and in some cases may be associated with an increased risk of gastric cancer. This breath test works by measuring carbon dioxide released in the breath after ingestion of a urea solution, as H. pylori converts urea into carbon dioxide and ammonia. The solution contains only a tiny amount of urea — far less than what your own body naturally makes every single day and because it does not require an endoscopy, the test is patient-friendly, comfortable, and suitable for children and adults. It is also valuable for confirming eradication of H. pylori after treatment, helping clinicians ensure that therapy has been successful in resolving the infection.



[Read More ›](#)

3. SIBO (Small Intestinal Bacterial Overgrowth)

SIBO refers to small intestinal bacterial overgrowth and may be associated with symptoms like bloating, distension, gas, diarrhea, constipation, dyspepsia, and irritable bowel syndrome (IBS). It may also occur in the context of conditions such as inflammatory bowel disease (IBD), diabetes, fibromyalgia, rosacea, Parkinson's disease, and obesity. SIBO profiles are non-invasive breath tests that measure exhaled hydrogen (H₂) and methane (CH₄) after the patient ingests a lactulose solution. These measurements may help evaluate small intestinal bacterial overgrowth (SIBO) and intestinal methanogen overgrowth (IMO). It is recommended to consult with a healthcare professional for accurate interpretation and personalized treatment planning.



[Read More >](#)

[Sample Report >](#)

4. Gut Barrier Panel

Leaky gut occurs along a spectrum and therefore includes key gatekeeper markers to accurately assess intestinal barrier integrity. These include Candida, Zonulin, Occludin, and Lipopolysaccharides (LPS), with measurement of IgG 1-4 / C3d along with IgA 1 and 2 to evaluate both systemic and mucosal immune responses. Candida overgrowth indicates dysbiosis and may act as a precursor to leaky gut, while elevated zonulin reflects increased intestinal permeability due to weakened regulation of gut-lining. Occludin serves as a marker of gut-lining integrity, with higher levels suggesting breakdown of that barrier. Elevated antibodies to LPS, a component of gram-negative bacteria, may indicate leaky gut and gastrointestinal inflammation. If any of the eight markers are positive, consultation with a healthcare provider and initiation of a gut healing protocol is recommended.



[Read More >](#)

5. Zonulin

Zonulin has emerged as a useful biomarker for evaluating intestinal barrier integrity, as elevated levels of this protein may reflect increased permeability of the gut lining. Higher zonulin levels have been associated with conditions often linked to impaired barrier function, such as “leaky gut”, Crohn’s disease, coeliac disease, and a range of inflammatory, autoimmune, and gastrointestinal disorders. By assessing zonulin, clinicians gain a non-invasive window into how tightly the intestinal junctions are functioning, which may help guide further evaluation, identify potential contributors to inflammation, and support more targeted treatment strategies aimed at restoring gut barrier health. It is recommended to consult with a healthcare professional for accurate interpretation and personalized treatment planning.



[Read More >](#)

6. Gut Microbiome Test

A gut microbiome test is a diagnostic tool that uses a stool sample to analyze the composition and diversity of microorganisms present in the gastrointestinal tract, particularly in the colon. The gut microbiome consists of trillions of bacteria, viruses, fungi, and other microorganisms that play a crucial role in various aspects of human health, including digestion, metabolism, immune function, and even mental health. It is recommended to consult with a healthcare professional for accurate interpretation and personalized treatment planning.



[Read More >](#)

7. Microbiomix Metagenomic Mapping

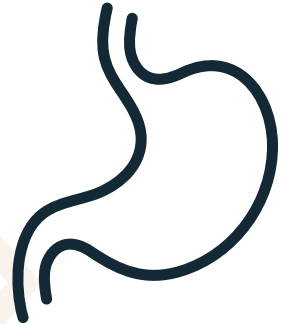
The Microbiomix test is an advanced stool test that uses comprehensive shotgun metagenomic sequencing to study the DNA of all microbes living in your gut. Instead of looking for only a few organisms, this method scans over 28,000 types of bacteria, viruses, fungi, and other microbes. This helps detect even those microbes that are rare, unculturable, or previously unknown, giving a far more complete picture of your gut health. Through a simple stool sample, this test provides detailed information not only about your microbiome balance, but also measures important markers related to digestion, inflammation, leaky gut (intestinal permeability) and overall gut function.



[Read More ›](#)

8. GI Map

The GI-MAP stool test utilizes cutting edge, Quantitative PCR technology to provide a DNA/PCR based stool test. This technology is highly accurate and delivers fast results. It uses stool testing to measure the amount of harmful and beneficial bacteria in the gut. It can also determine the different types and quantities of other microorganisms like fungi, viruses, and parasites. Leveraging its high diagnostic precision, the GI-MAP supports clinicians in crafting individualized treatment plans by identifying priority infections and confirming that underlying gastrointestinal processes are functioning optimally. It is recommended to consult with a healthcare professional for accurate interpretation and personalized treatment planning.



[Read More >](#)

9. EndoSelect (Salivary Hormone Test)

EndoSelect Salivary allows clinicians to choose a combination of specific salivary endocrine biomarkers to assess a patient's hormone levels. This test is more convenient than traditional blood tests, as it can be done at home and usually doesn't require fasting. Its accuracy comes from measuring these markers in saliva rather than blood. EndoSelect Salivary can be used to diagnose a variety of hormone imbalances, which can cause symptoms such as fatigue, weight gain, mood swings etc. It is recommended to consult with a healthcare professional for accurate interpretation and personalized treatment planning.



[Read More >](#)

[Sample Report >](#)

10. Adrenocortex Stress Hormone Profile

The Adrenocortex Stress Hormone Profile (ASHP) provides an assessment of the Hypothalamic-Pituitary-Adrenal (HPA) axis using carefully timed salivary samples of the hormones cortisol and DHEA. Salivary testing is an easy, non-invasive option to measure unbound, biologically active parent hormone levels. It helps in detecting imbalances that can manifest in a wide range of clinical conditions, including hypertension and cardiovascular disease, gastrointestinal and immune dysfunction, diabetes and metabolic syndrome, depression, chronic fatigue and insomnia, weight gain, and persistent pain. It is recommended to consult with a healthcare professional for accurate interpretation and personalized treatment planning.



[Read More >](#)

11. D.U.T.C.H. (Dried Urine Test for Comprehensive Hormones)

The D.U.T.C.H. test is a comprehensive hormone assessment using dried urine samples collected at key time points throughout the day. It measures various hormones, including estrogens, progestagens, androgens, glucocorticoids including free cortisol, free cortisone, and melatonin. These multiple samples provide a detailed analysis of hormonal patterns for understanding complex hormone-related issues. The test reports are designed to be practitioner and patient-friendly, offering detailed explanations, comments, and a symptomatology chart based on the results. It is recommended to consult with a healthcare professional for accurate interpretation and personalized treatment planning.



[Read More >](#)

12. NeuroSpot Test

With a urine and saliva test, NeuroSpot helps assess how much stress your body may be experiencing by measuring key stress hormones and their related messenger chemicals. You can complete the test quickly and conveniently at home, thanks to the proprietary DrySpot technology. To determine chronic stress and burn-out in a targeted way, we have two analysis packages at our disposal:

NeuroSpot Basic: Serotonin, Dopamine, Noradrenaline, DHEA-S, Cortisol

NeuroSpot Plus: all substances of NeuroSpot Basic + GABA and Glutamate

It is recommended to consult with a healthcare professional for accurate interpretation and personalized treatment planning.



[Read More >](#)

13. Comprehensive Thyroid Profile

This profile assesses multiple aspects of thyroid function, including ultrasensitive TSH, free T4, free T3, and reverse T3, aiding in the diagnosis and management of thyroid disorders. Reverse T3 (rT3) testing provides additional insight into thyroid function by showing how the body converts T4 into its inactive form, offering information that standard tests do not capture. Elevated rT3 levels may be seen during periods of physiological stress, acute or chronic illness, inflammation, infection, calorie restriction, postoperative states, or cortisol-related stress, and may reflect a temporary metabolic shift in which the body reduces active thyroid hormone availability. This makes rT3 useful in situations where symptoms persist despite normal routine thyroid markers or when assessing thyroid changes during illness or stress.



[Read More >](#)

14. Urine Iodine

The Urine Iodine test is a simple and accurate way to check if your body has enough iodine for healthy thyroid function. Since most iodine we consume is passed through urine, this test helps identify both deficiency and excess that may affect metabolism, growth, brain development, and hormone balance. It is especially useful for evaluating thyroid disorders, pregnancy needs, and nutrition-related iodine requirements.



[Read More >](#)

[BACK TO INDEX](#)

15. Metabolomix+®

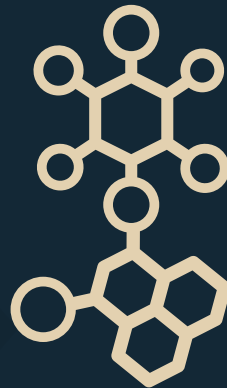
Metabolomix+® is a comprehensive functional nutrition test that evaluates how your body uses nutrients and produces energy. Using a simple first-morning urine sample, it assesses organic acids, amino acids, oxidative stress markers, and other metabolic pathways to identify needs for antioxidants, B-vitamins, minerals, digestive support, fatty acids, and amino acids. This test provides a deeper look at mitochondrial function, methylation, toxin exposure, and overall metabolic balance to help guide personalised, root-cause-oriented care.



[Read More >](#)

16. Organic Acid Test (OAT)

Organic acid analysis, a group of biochemical tests, decodes metabolic function by quantifying specific organic acids in bodily fluids. These acids, formed during normal metabolism, may show elevated levels in conditions such as inborn metabolic errors, mitochondrial dysfunction, or gastrointestinal dysbiosis. The Organic Acids Test (OAT) provides a comprehensive nutritional and metabolic snapshot of an individual's overall health. The OAT measures 76 organic acids from one easy to collect urine sample. It is recommended to consult with a healthcare professional for accurate interpretation and personalized treatment planning.

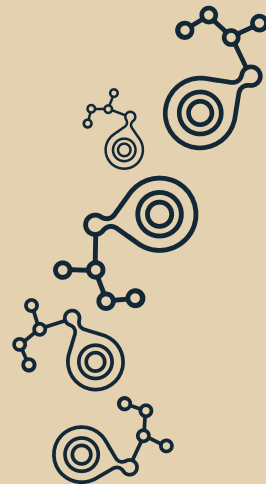


[Read More >](#)

[Sample Report >](#)

17. Essential & Metabolic Fatty Acids Analysis

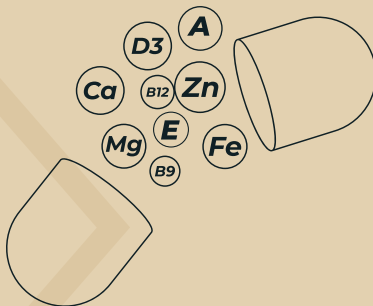
Fatty acid imbalances can be a causative factor in a variety of chronic health conditions. The Essential Fatty Acids Profile assesses the critical balance between essential Omega-6 and Omega-3 fatty acids. The Fatty Acids Profile can indicate the need for fatty acid supplementation and/or dietary modification. Omega-3, omega-6 and trans fats all play a role in your health and are related to risk for heart disease. Tracking these numbers can help you optimize them for your health. The Omega-3 Index, Trans Fat Index, Omega-6/Omega-3 ratio and AA/EPA ratio all respond to what you eat. We recommend testing annually to confirm you are getting the right mix of fats for your body. It is recommended to consult with a healthcare professional for accurate interpretation and personalized treatment planning.



[Sample Report >](#)

18. Comprehensive Vitamins and Minerals Profile

The Comprehensive Vitamins and Minerals Profile offers a functional view of your nutrient status, assessing key vitamins and minerals that support energy, immunity, metabolism, and overall wellness. It measures Vitamin D3, B12, B9, A, E, C, along with calcium, phosphorus, magnesium, zinc, and iron, plus advanced iron markers including ferritin, TIBC, UIBC, transferrin saturation, and sTfR. RBC folate is included for a more accurate long-term measure of folate inside cells, and urinary iodine provides a functional, more reliable indicator of nutritional iodine status. Together, these markers help identify subtle imbalances and guide personalized, preventive care.



[Read More >](#)

19. RBC Folate Test

Folate is essential for energy production, red blood cell formation, fertility, pregnancy health, methylation, mood balance, and brain function. The RBC Folate test measures how much folate (Vitamin B9) is stored inside your red blood cells, offering a far more reliable long-term assessment of folate status than serum folate, which can fluctuate daily based on recent meals or supplements. Low RBC folate may contribute to fatigue, weakness, anemia, hair loss, memory issues, infertility, pregnancy complications, high homocysteine, and mood concerns.



[Sample Report >](#)

20. Allergynius Dx (allergy-CRD testing-IgE based)

The Molecular Allergy Diagnostics test is based on Micro-array using nano Particle and provides results for 163 food and respiratory allergens along with 294 components. Allergynius Dx is a “game changer” for diagnosing allergies and predicting the probability of immunotherapeutic success. By using advanced component-resolved diagnostics built on nanotechnology, this test offers physicians and patients a higher level of precision and personalization. It is recommended to consult with a healthcare professional for accurate interpretation and personalized treatment planning.



[Read More >](#)

[Sample Report >](#)

21. ImuPro (Food Intolerance/sensitivity tests-IgG based)

ImuPro is an IgG based food intolerance test. Our Test meticulously examines IgG-linked Food Allergies, revealing specific proteins that might trigger an exaggerated immune response. The Food Intolerance Test focuses on milk, wheat, yeast fruits, vegetables and all the other foods which we eat in our day to day life that can challenge digestion, thus offering insights into potential discomforts. IgG Delayed Food Allergy Test delves even further, unveiling delayed immune reactions to foods. With ImuPro's tests, you can gain a holistic understanding of how your body interacts with different foods, enabling you to make informed dietary choices for your improved well-being. It is recommended to consult with a healthcare professional for accurate interpretation and personalized treatment planning.

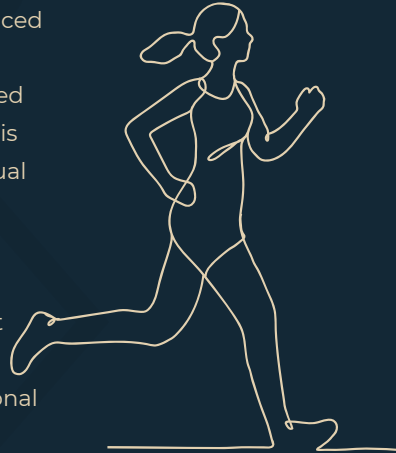


[Read More >](#)

22. METACHECK®

CoGAP MetaCheck® offers a personalized window into how your body processes food and burns energy. Using advanced genetic analysis, it identifies your unique metabolic type and translates it into clear, actionable nutrition guidance tailored to how your body works—not generic diet rules. With this insight, you can choose foods that align with your individual metabolism, improve energy levels, support weight management, and optimize overall well-being. CoGAP MetaCheck® turns complex genetic data into a simple, practical roadmap, helping you make smarter choices that fit your body's natural design.

It is recommended to consult with a healthcare professional for accurate interpretation and personalized treatment planning.



[Read More >](#)

23. Histamine Intolerance Test (DAO- Diamine oxidase)

Histamine intolerance testing, particularly the Diamine Oxidase (DAO) assay, is a sophisticated diagnostic tool designed to measure the activity of DAO, an enzyme pivotal in metabolizing histamine. A deficiency in DAO can lead to an accumulation of histamine, manifesting in a constellation of allergy-like symptoms. This test, often conducted through a blood sample, provides valuable insights into the underlying causes of these symptoms and in formulating a tailored dietary and lifestyle modification plan for individuals suffering from histamine intolerance. It is recommended to consult with a healthcare professional for accurate interpretation and personalized treatment planning.



[Read More >](#)

24. TruAge® Epigenetic Biological Age Test

The TruAge Epigenetic Biological Age Test measures how fast the body is aging on a cellular level. It evaluates DNA methylation patterns rather than relying solely on chronological age. DNA methylation refers to chemical markers that turn genes on or off, and this test examines more than 900,000 methylation sites to assess how factors like inflammation, oxidative stress, sleep, nutrition, metabolic health, toxin exposure, and lifestyle habits may influence the rate of aging. The TruAge test can reveal important information such as a person's biological age versus their actual calendar age, their rate of aging per year, the degree of their immune system aging, and their intensity of inflammation-driven aging pathways. It is useful for individuals seeking longevity planning, anti-aging strategies, metabolic conditioning, recovery from chronic illness or long-COVID, cognitive decline prevention, and overall vitality improvement. The results can help healthcare practitioners design tailored longevity protocols involving NAD+ support, omega-3 and polyphenol supplementation, circadian rhythm repair, anti-inflammatory nutrition, fasting strategies, and detoxification support to potentially slow or reverse biological aging.

[Read More ›](#)

25. myDNA Longevity Genetic Panel

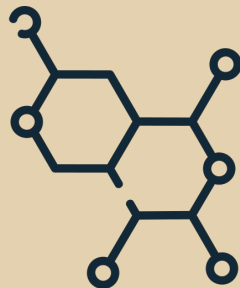
A genetic test that helps you understand how your body is likely to age. This panel includes key genetic markers such as APOE, MTHFR, FOXO3, and SOD2, each offering insight into different aspects of healthy aging. APOE provides information related to lipid metabolism and cognitive health, MTHFR influences methylation and detoxification pathways, FOXO3 is associated with cellular repair and longevity, and SOD2 plays a role in antioxidant defense and protection against oxidative stress. Together, these markers help your practitioner understand your unique biological tendencies and create a more personalized, targeted plan to support long-term wellness and healthy aging.



[Read More >](#)

26. NAD+ Profile

The NAD Panel helps us understand how your body makes and uses energy at a cellular level. NAD (Nicotinamide Adenine Dinucleotide) is a natural molecule found in every cell and is essential for energy production, metabolism, detoxification, and slowing age-related decline. As we grow older, NAD+ levels drop, which may lead to tiredness, slower recovery, inflammation, poor sleep, and a higher risk of chronic diseases. This test measures important NAD-related markers to find out whether your body needs support to improve energy, cellular repair, longevity, and antioxidant protection. It can guide personalized recommendations such as NAD+ boosting nutrients, mitochondrial support, detox pathways, and nutrition/lifestyle strategies to improve energy and overall health.



[Read More >](#)

27. LIPOSCREEN™ LDL Subfractions & Oxidised LDL

A regular cholesterol test cannot show the type and size of cholesterol particles in your blood. Some people have “normal” cholesterol numbers but still develop heart disease because they have small, dense LDL particles, which are more harmful and can deposit inside blood vessel walls more easily. The LIPOSCREEN™ panel provides a much deeper assessment by checking all LDL sub-types, including the more dangerously atherogenic LDL subfractions (types 3 through 7), and also measures oxidised LDL, a form of cholesterol that has been damaged by inflammation and is strongly linked to the development of atherosclerosis (clogged arteries).

This advanced test helps your doctor understand your true cardiac and metabolic risk, even when routine cholesterol looks normal, and supports more personalised treatment plans for cardiac health, inflammation, diabetes, PCOS, and metabolic syndrome.

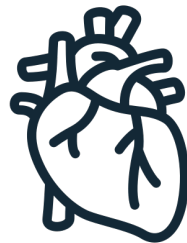


[Read More ›](#)

[BACK TO INDEX](#)

28. CARDIAC PRO - Cardiac Health Profile

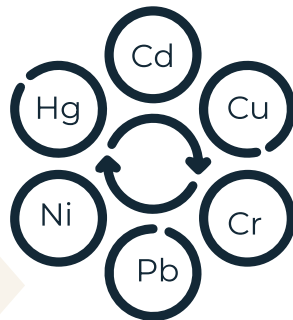
Early heart risk can remain hidden even when routine cholesterol appears normal, making advanced markers valuable for a more precise evaluation of cardiovascular health. ApoB reflects the number of atherogenic LDL particles, while ApoA1 represents protective HDL function, and their ratio offers a clearer indication of cardiac risk than standard lipid values alone. Lipoprotein(a) [Lp(a)], a genetically influenced particle, may promote early cardiovascular disease even in otherwise healthy individuals. High-sensitivity CRP (hs-CRP) helps assess vascular inflammation, Lp-PLA2 provides insight into inflammation within arterial walls, and Homocysteine relates to clotting and vascular stiffness. Together with a detailed lipid profile, these markers deliver a comprehensive preventive assessment to help uncover silent risks and guide more targeted cardiac health strategies.



[Read More >](#)

29. Heavy Metals (Blood, Hair, Stool and Urine)

Heavy metals can accumulate in the body and disrupt the balance of essential nutrients, and become toxic to organ systems. While certain elements are vital for proper body function, others such as mercury, lead, cadmium, aluminum, and arsenic are toxic to the human body and interfere with its functioning. These toxic metals have no known physiological functions and can cause harm to organ systems. This test offers various testing options, including urine, blood, stool, and hair samples, to evaluate the status of toxic metals and essential elements. This allows practitioners to select the most clinically appropriate option for their patients. It is recommended to consult with a healthcare professional for accurate interpretation and personalized treatment planning.



[Read More >](#)

30. Mycotox™ – Mycotoxin Panel

Some molds release mycotoxins, harmful toxins found in damp buildings, cars, stored foods, and water-damaged spaces. These toxins can be hard to detect because symptoms are often vague and may include fatigue, headaches, brain fog, sinus issues, breathing problems, skin flare-ups, mood changes, and immune weakness. The MycoTOX Profile™ is a urine test that measures 11 major mycotoxins, including Aflatoxin M1, Ochratoxin A, Zearalenone, and Trichothecenes, to help identify hidden mold exposure.



[Read More ›](#)

Terms & Conditions

- The tests mentioned in this brochure are conducted either in-house or outsourced to an international lab partner. The final report will be available on the letterhead of the specific lab where the testing is executed.
- In the event of alarming or unexpected test outcomes, it is strongly advised to promptly contact the referring doctor for further consultation and necessary action.
- Laboratory results are intended to be assessed in conjunction with the patient's clinical history.
- Please carefully read and adhere to all prerequisites, including the cessation of other medications, to ensure result accuracy.
- The report will contain the name and age provided at the time of registration.
- A second sample may be requested for an indeterminate result or due to any other pre-analytical/analytical reasons.
- Reports will be shared via email or WhatsApp in PDF format to the registered mobile number or email provided.
- Test results are explicitly stated not to be valid for medico-legal purposes.
- The courts (forums) at Delhi shall have exclusive jurisdiction in all disputes/claims pertaining to the tests and/or results.

📍 C2/1, SDA Aurobindo Marg, Next to Aurobindo Market, New Delhi-110016

📞 +91 11 45004200
Hours : 7.30 AM - 7.00 PM Monday - Saturday

📍 Ground Floor, Palm Springs Plaza, Golf Course Road, Sector 53, Gurugram, 122001

📞 +91 9818881065
Hours : 8 AM - 6 PM Monday - Saturday

📍 Ground Floor, N-36, Greater Kailash - 1, New Delhi - 110048

📞 +91-99103 13567
Hours : 8 AM - 4 PM Monday - Saturday

📍 G-42, Block B, Spaze Business Park, Badshahpur, Sector 66, Gurugram, Haryana 122102

📞 +91-9220503540
Timing: 8:00am to 6:00pm (Monday-Saturday)

📍 Building No. 25, Ground Floor, Central Market, Punjabi Bagh New Delhi - 110026

📞 +91-9810678165
Hours : 8 AM - 6 PM Monday - Saturday

📍 D 851 Ground floor, New Friends Colony New Delhi 110025

📞 +91-9311225665
Hours : 8 AM - 6 PM Monday - Saturday

📍 Max Square (Lower Ground Floor), Jaypee Wishtown, Sector 129, Noida - 201304

📞 +91-9220503545
Timing: 8:00am to 6:00pm (Monday-Saturday)

📍 Ground Floor, 12/13, Vasant Arcade, Nelson Mandela Marg, Vasant Kunj, New Delhi 110070

📞 +91-99105 89234
Hours : 8 AM - 6 PM Monday - Saturday

📍 Ground Floor, UA No-25, Jawahar Nagar, Malka Ganj, Kamla Nagar, New Delhi-110007

📞 +91 9289157434
Hours : 8 AM - 6 PM Monday - Saturday

📞 +91 9999992020
www.drdangslab.com
info@drdangslab.com

[Visit Our Website](#)

